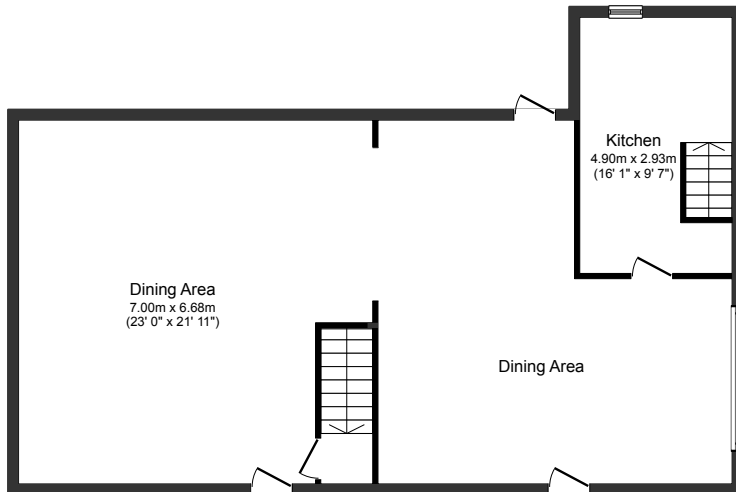


## Basement

Floor area 101.0 sq. m. (1,087 sq. ft.) approx



## Ground Floor

Floor area 102.0 sq. m. (1,098 sq. ft.) approx

Total floor area 203.0 sq. m. (2,185 sq. ft.) approx

This plan is for illustration purposes only and may not be representative of the property. Produced by KeyAGENT